



Children and Youth In-Care in Newfoundland and Labrador

Rachelle Cochrane, Deputy Minister
May 27, 2016


**Newfoundland
Labrador**

Child, Youth and Family Services

Department of Child, Youth and Family Services

Mission

By March 31, 2017, the department will have transformed the program and service delivery system to better protect children and youth and support their development.

Children and Youth Care and Protection Act

- S. 8 “The purpose of this Act is to promote the safety and well-being of children and youth who are in need of protective intervention.”



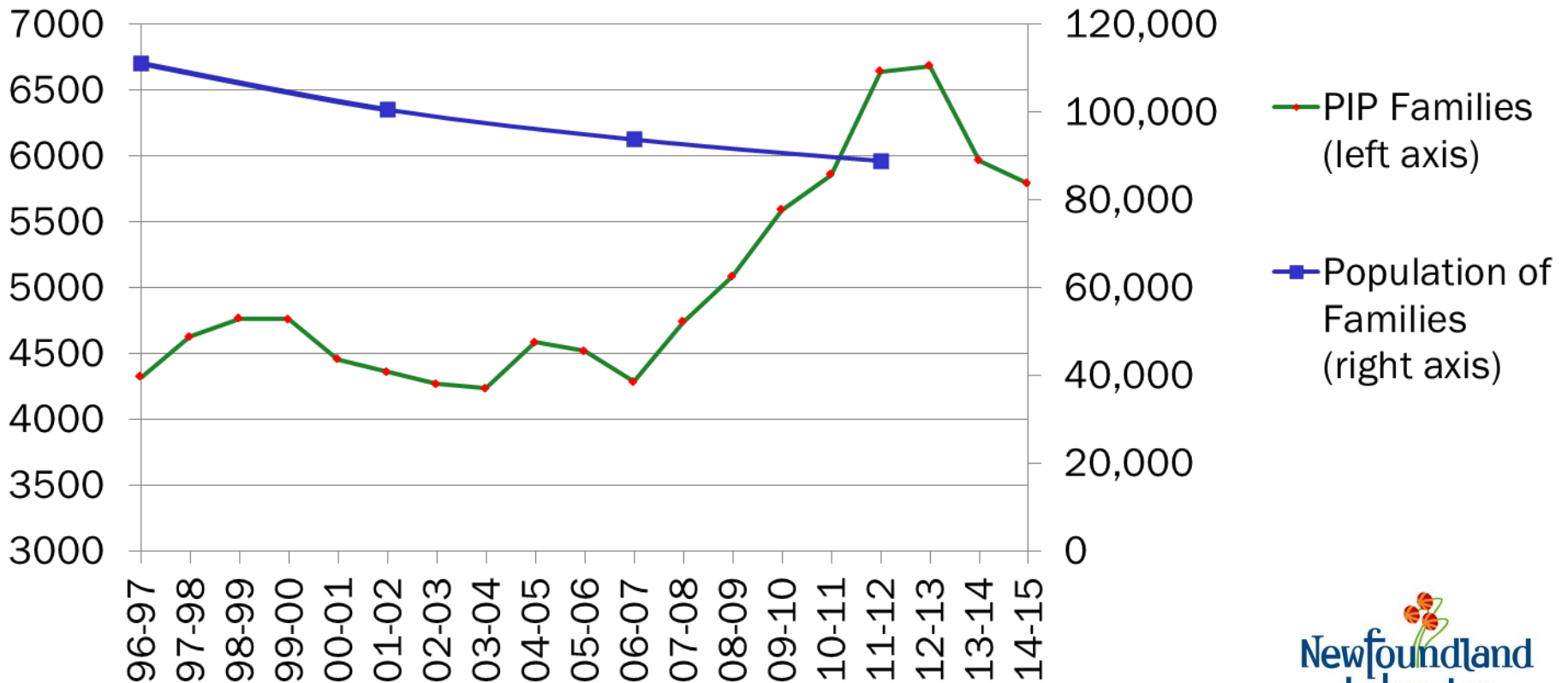
Overview

1. Protective Intervention Program
2. In Care Program
3. Summary
4. Examples of Initiatives

1) Protective Intervention Program (PIP)

- Designed to promote the safety and well-being of children who are at risk of maltreatment.
- As of Dec. 31, 2015 (snapshot):
 - 4,619 children in 2,889 families
 - 519 (~11%) were living with kin.
- In NL, ~89,000 families with children (Census, 2011); of these ~6.5% are in PIP.

1) Cont'd: PIP Families (annual total)



*Unadjusted CRMS Data

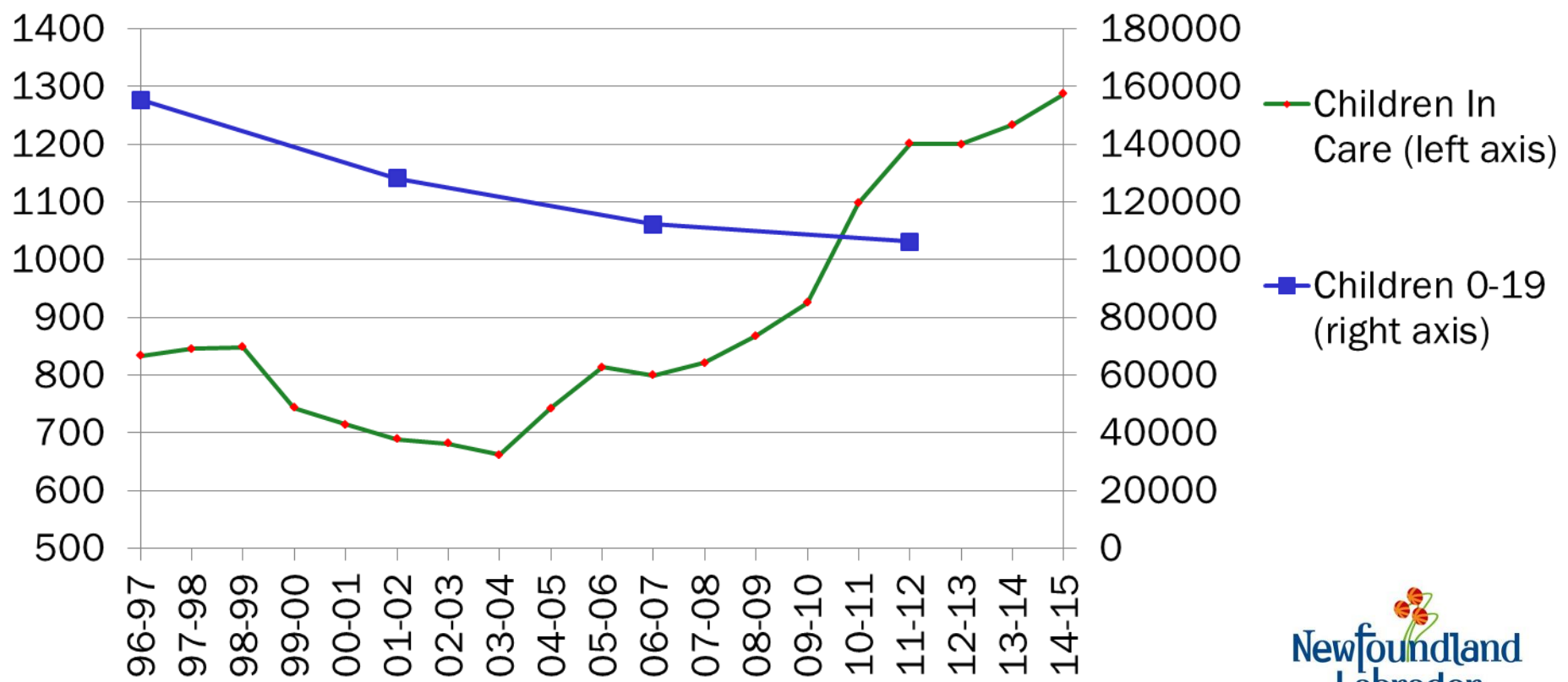
1) Cont'd: Profile of Children in PIP (2015)

- Newfoundland and Labrador Housing Corporation
 - 19% of PIP families reside with NLHC, compared to 3% of all NL families with children.
- Income Support
 - 33% of PIP families receive income support, compared to 8% of all NL families with children.
- In Care Program
 - 3.6% of children/youth in PIP families are removed and placed In Care.
- Outcome indicators under development include:
 - Recurrence of maltreatment
 - School attendance

2) In-Care Program

- When a child/youth cannot reside safely in the family home they are removed under a voluntary protective care agreement, or through a court order.
- As of Dec. 31, 2015 (snapshot):
 - 949 children/youth in-care
 - 0-4 years: 26%
 - 5-9 years: 30%
 - 10-12 years: 16%
 - 13-15 years: 16%
 - 16+: 11%
 - 319 (34%) are Aboriginal
 - 524 (55%) are in Continuous Custody
- 57% of children/youth in continuous custody are siblings (June 2015).
- Like NL, Aboriginal children and youth are overrepresented in the child protection system across Canada.

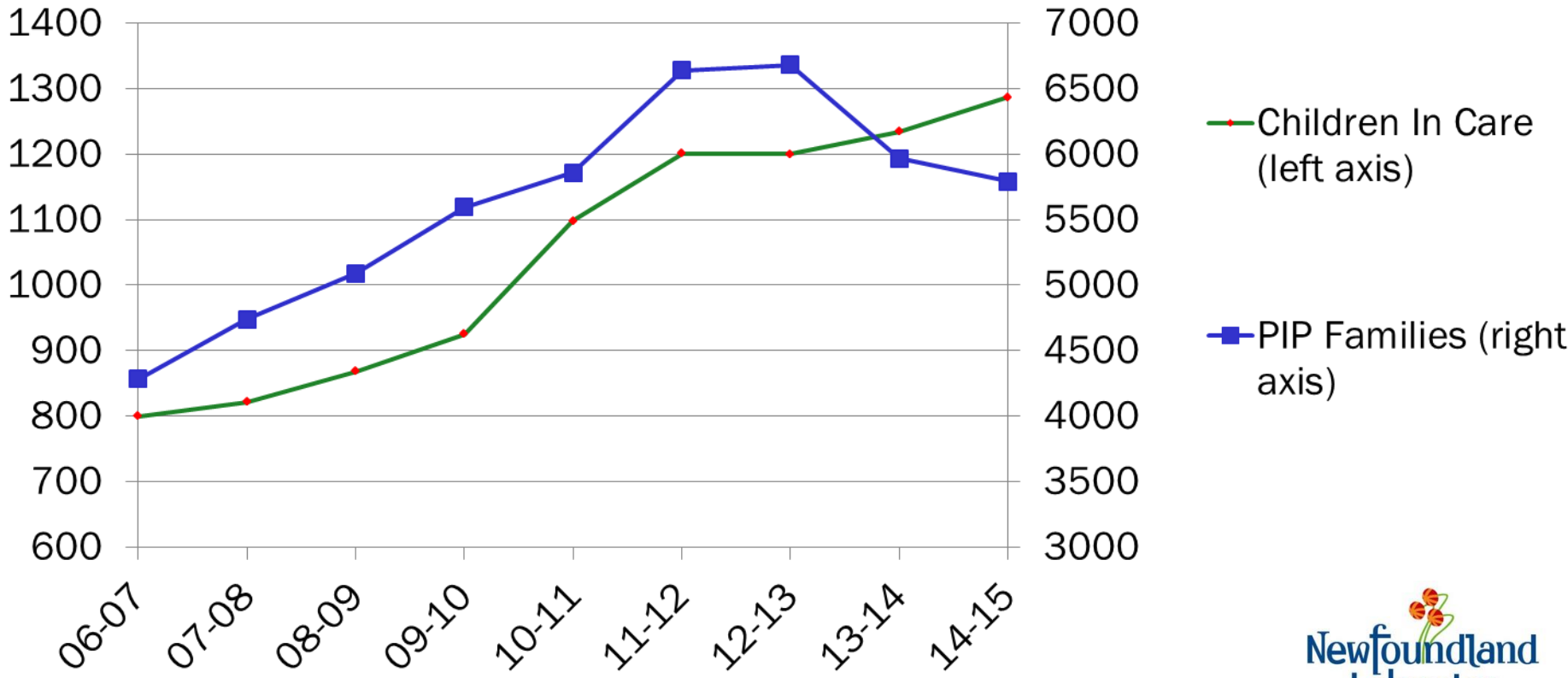
2) Cont'd: Children In Care (annual total)



*Unadjusted CRMS Data



2) Cont'd: Children In Care & PIP Families (annual total)



*Unadjusted CRMS Data

2) Cont'd: In Care - Educational Outcomes

- Education outcomes differ for in care students compared to all students; EECD 13/14 Standardized Tests

	% of students below grade level expectations			% of students below the provincial average	
	Grade 1 Reading	Grade 2 Reading	Grade 3 Math	Grade 6 Math	Grade 9 Math
In Care Students	70%	50%	65%	84%	87%
All Students	46%	39%	55%	43%	48%

2) Cont'd: In Care – Educational Outcomes

- In the 2013/14 school year there were 114 youth in care who, by age, should be in at least high school Level III. Of these 114:
 - 26 (23%) had dropped out.
 - 62 (54%) were not eligible to graduate even if they passed all courses.
 - 26 (23%) were eligible to graduate.
 - 20 successfully graduated; 75% with general diploma, compared to 31% province-wide.

2) Cont'd: In Care Snapshot – Dec. 2015

- Out of home placements are provided to meet the needs of children/youth (e.g. within their community, with their siblings, with kin, where developmentally appropriate, etc.).

PIP

- Children/youth living with kin 519

In Care Program 949

- Children/youth living in relative/ interim foster homes 207
- Children/youth living in traditional foster homes 528
- Children/youth living in specialized foster homes 18
- Children/youth living in staffed residential placements 127
- Other 69



2) Cont'd: In Care

- As the # of children/youth in-care increased in recent years, CYFS continues to recruit foster homes. However, there are currently insufficient numbers available in communities where homes are needed.
- There are 463 traditional foster homes available: 40% of these are child-specific relative homes.*
- Outcome indicators under development include:
 - Placement Stability
 - Permanency

*Data as of Dec. 31, 2015.

3) Summary

Demand Greater than Supply:

- Despite the reduction in the number of families in PIP, the number of children/youth coming in care continues to grow.
- With the in care increase, the demand for out of home care has grown and the supply of family-based homes has not kept pace with the demand.

Outcomes:

- Generally poorer educational outcomes for children and youth involved in the child protection system, as compared to the general population.

Permanency:

- 56% of children/youth in care are less than 9 years old.
- 55% of children/youth in care are in continuous custody (extremely complex issue).

National Context:

- Children protection services are facing similar challenges across the country.

4) Examples of Initiatives

Underway:

- PIP/In Care policies consistent province-wide.
- Enhanced funding for kin and foster homes; recruitment campaign launched; and piloting other projects.
- Social worker-caseload ratio of 1:20.

Under Development:

- Initiate reviewing of the *Children and Youth Care and Protection Act*.
- Enhance monitoring and tracking of child/youth outcomes.
- Working to enhance self esteem and resiliency of youth in care by working with them to find summer jobs.



Thank You